

PingID Setup **iD**

Navigate to the MFA enrollment site

<https://MyMFA.lb.com>

<https://MyMFA.lbrandscn.com> (China)

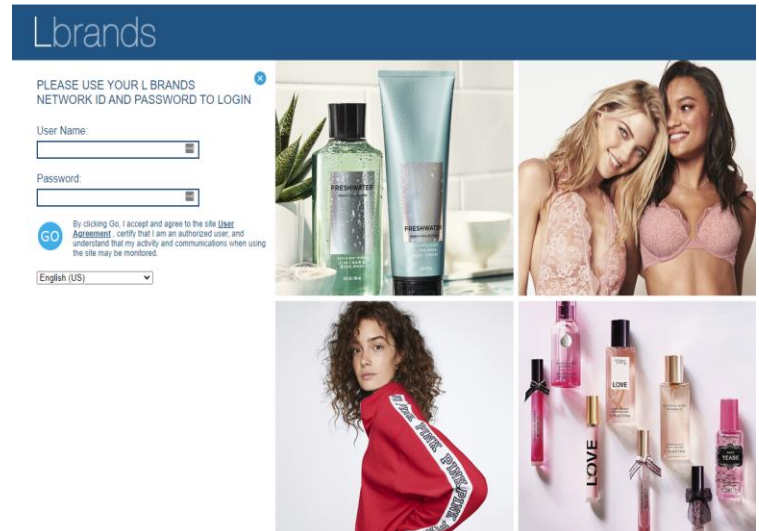
Enter your network credentials

Enter your email address then click

[Get Download Link](#)

Open the email using your mobile device or scan QR code using PingID app

Touch the appropriate mobile store option to download PingID



Lbrands

Information security is a top priority at L Brands. We now require two forms of authentication when you log into systems that contain sensitive data.

1. Download the PingID app from your phone's app store.
2. Click the "I already installed the PingID app" button below.
3. Follow the on screen enrollment instructions.
4. By completing the enrollment process and selecting your authentication preference, you agree that we may authenticate you through the use of biometric (touch ID), text messages, autodialed/prerecorded voice calls, email and other forms of authentication as they become available.

Enter your email address [Get Download Link](#)

I already installed the PingID app

[Click here to select email or other MFA methods.](#)


Available for iPhone & iPad Available for Android

Lbrands

Finish Pairing **PingID**

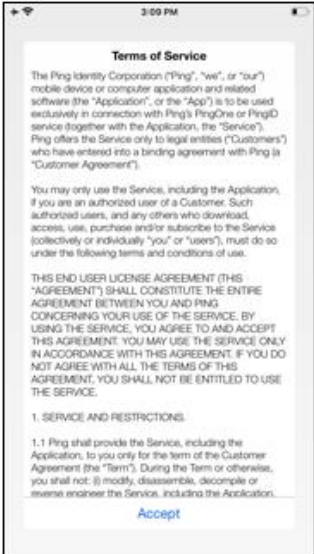
To complete the pairing process, simply open the PingID app on your mobile device and scan the following QR code. You can also manually pair your device using the pairing key below.

[Start Over](#)

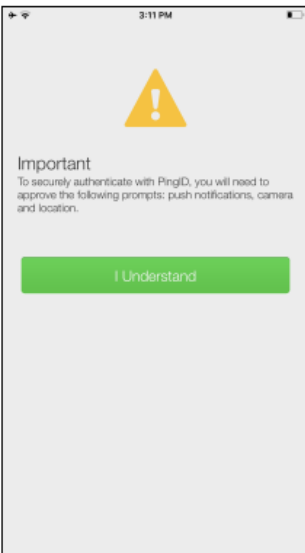


Pairing Key:

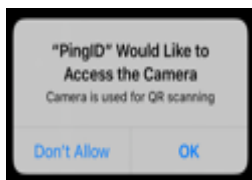
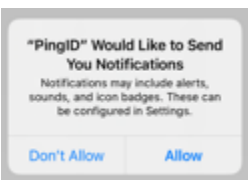
Open the App or Scan the QR code and select **Accept** for Terms of Service



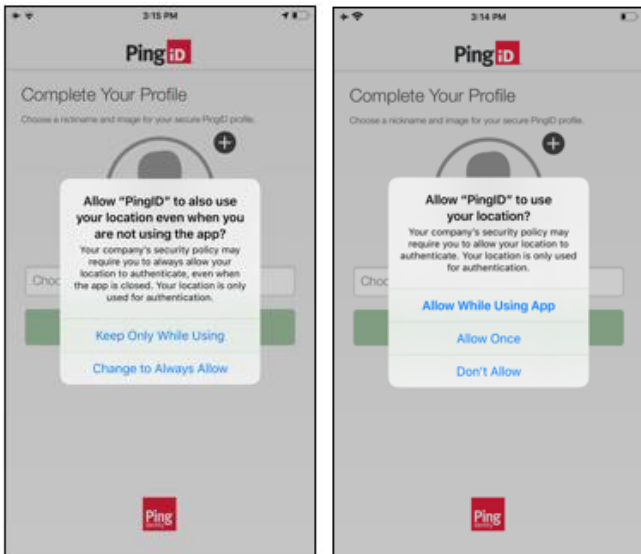
Select **I Understand** for important notice



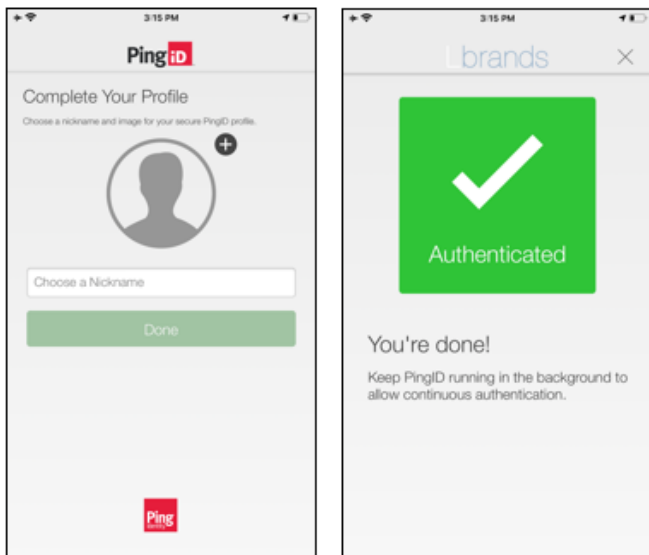
Allow PingID for Notifications and **OK** for Camera



Select **Keep Only While Using** and **Allow While Using App**



Choose a **Nickname** and select **Done**



Once authenticated, you should be all set.